

Stamp Basics Overview

Flat Plate vs. Rotary Press Printing



FP vs. RP Identification

Create "templates" to identify RP or FP.



FP vs. RP Identification

Create "templates" to identify RP or FP.



FP vs. RP Identification

Match "template" against stamp or cover.



FP vs. RP Identification

Match "template" against stamp or cover.



FP vs. RP Identification

Other "templates" can be used.

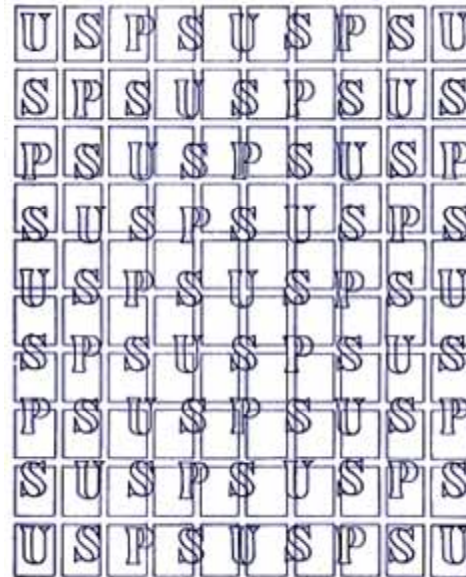
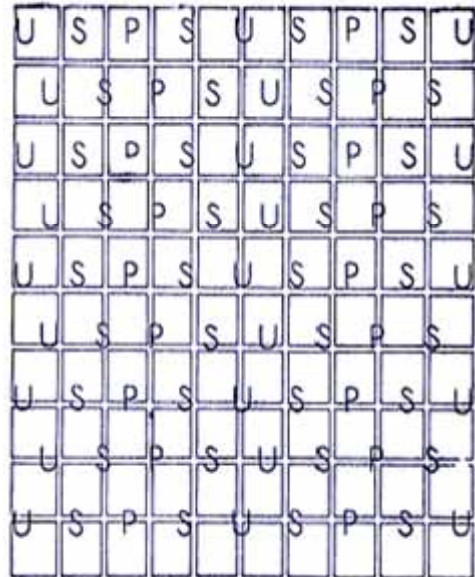
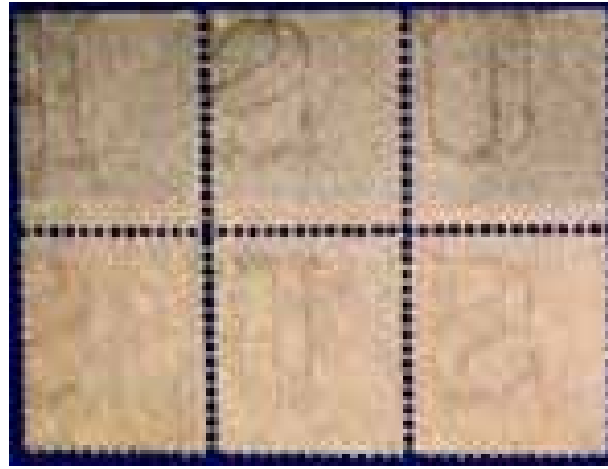
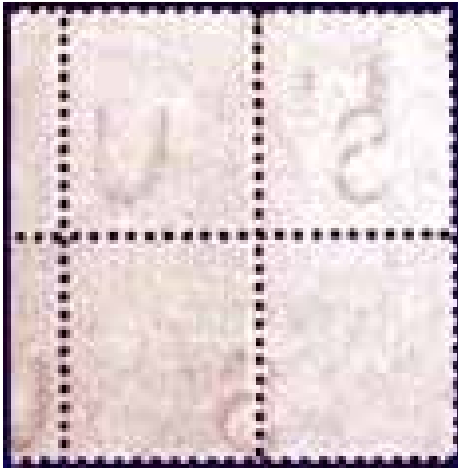


FP vs. RP Identification

Other "templates" can be used.



Single vs. Double Line Watermark

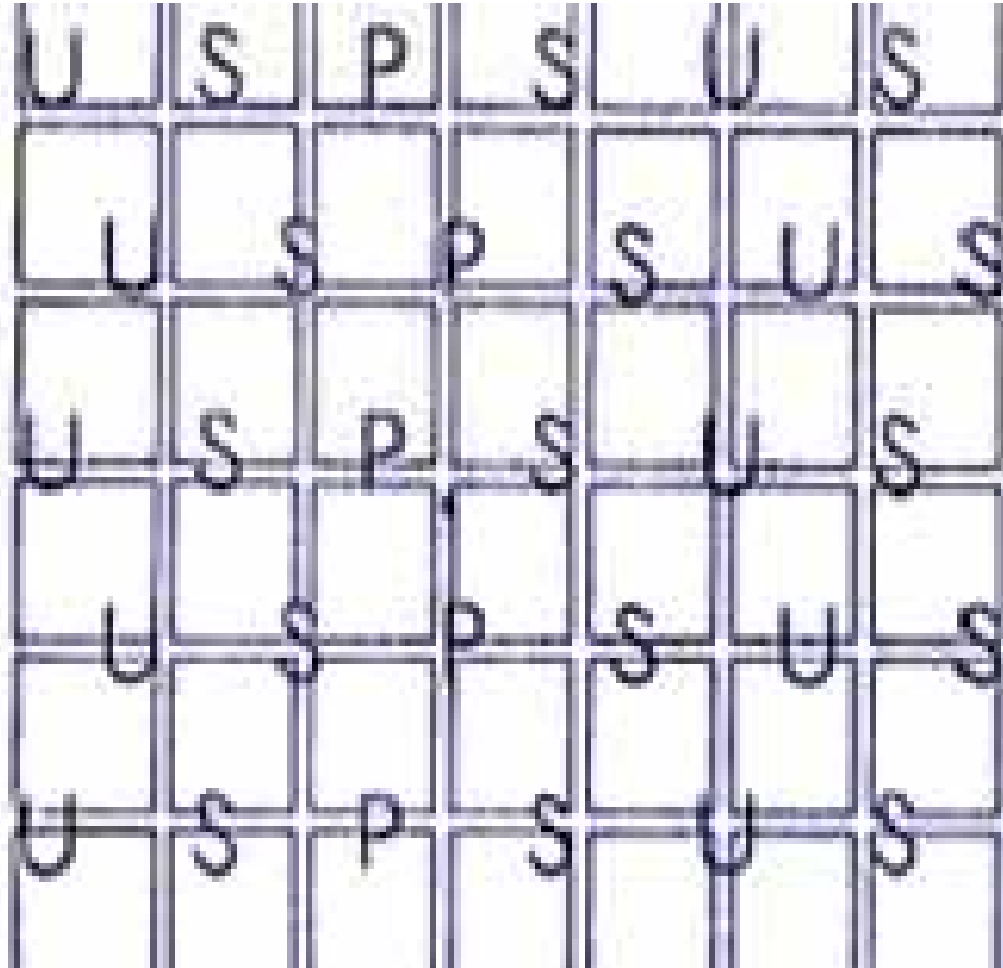


Note the larger size of the double line watermark.

Pairs are easier to identify.

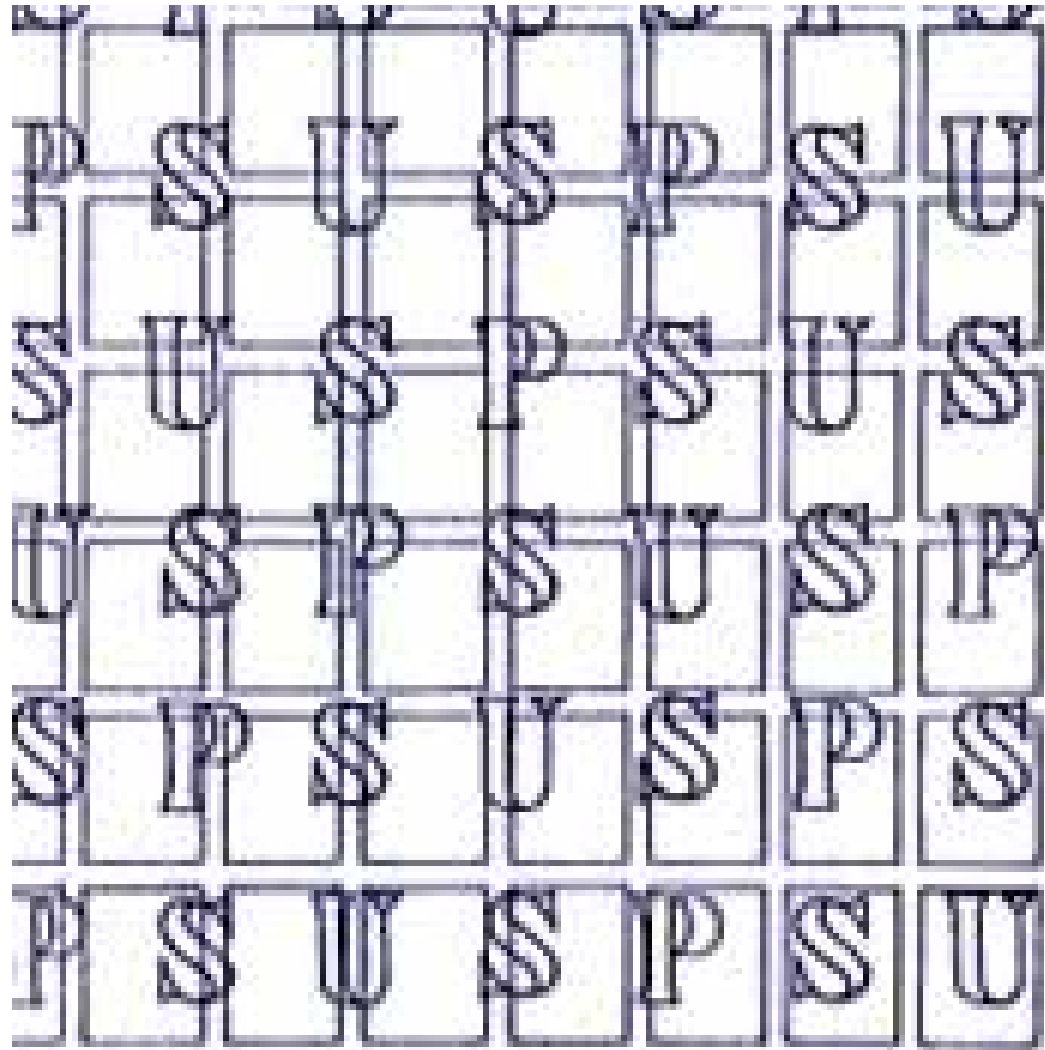
Single Line Watermark

Sometimes pairs
can be tough to
identify.



Double Line Watermark

Pair watermarks
can usually be
identified.



Engraved vs. Offset Printing



Engraved (Recess / Intaglio) – Ink is applied to plates. Paper is pressed onto the plate picking up the ink resulting in a stamp with a raised image. Sometimes a depression (debossing) exists on back of stamp.



Offset (Lithography) – Greasy ink is spread on a litho stone or metal plate. Acid is applied to the plate repelling the ink except at the greasy lines of the design. Resembles engraving though with a duller appearance.

Engraved vs. Offset Example



Engraved Identificaiton



You can feel the engraving with your fingers. Rubbing a piece of foil over the engraved stamp will reveal an image of the design – not so with the offset stamp.

Detecting a Fake U.S. Coil



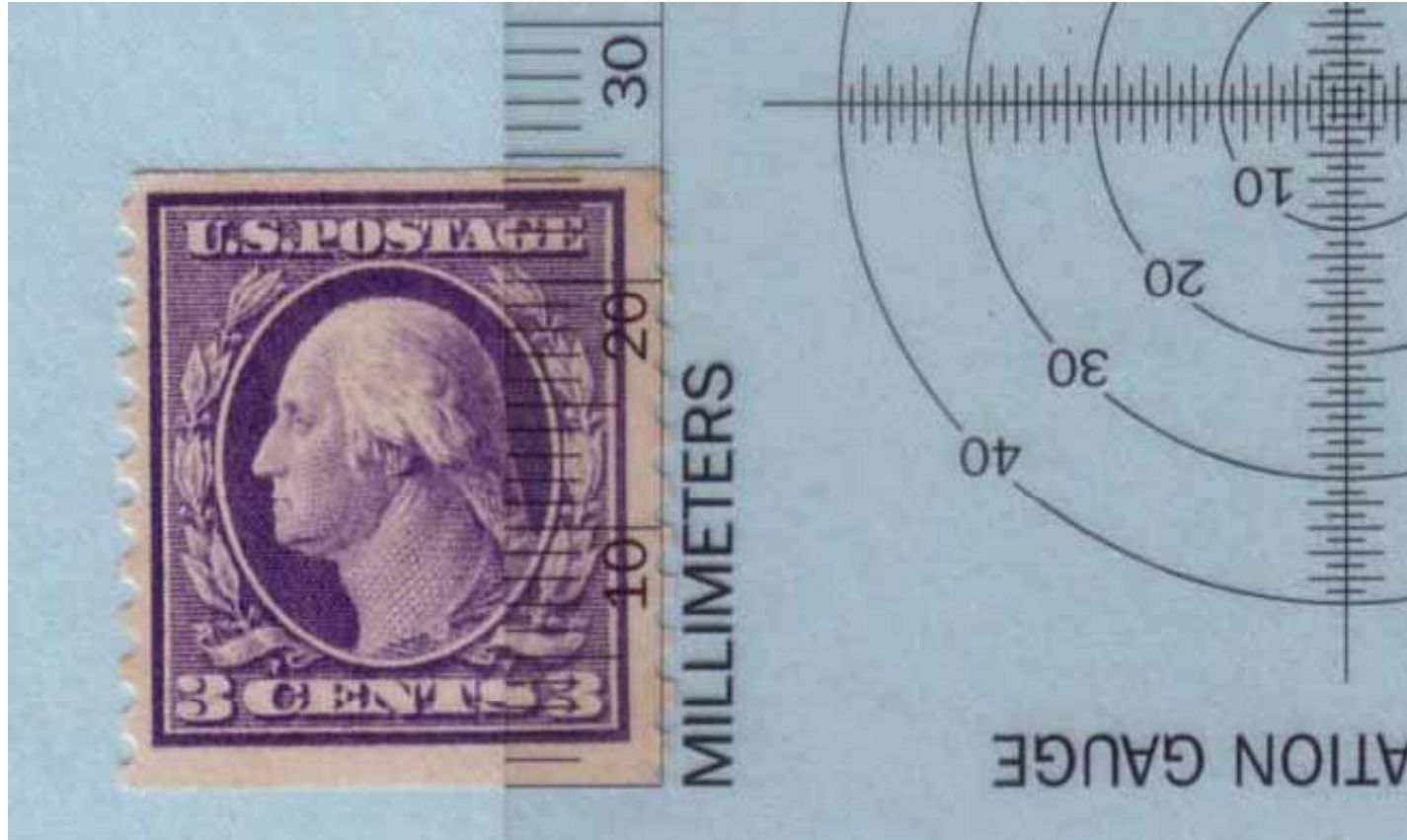
21 mm



25 mm

All genuine U.S. coil stamps have an edge-to-edge width of 21mm for vertical coils or a height of 25mm for horizontal coils.

Fake U.S. Coil Example



Fake U.S. Coil Certificate

American Philatelic Society

Expert Committee Report

Members of the American Philatelic Expertizing Service have examined the item submitted and it is their opinion that it is:

United States, Scott No. 426, altered with perforations trimmed off bottom.



Hard vs. Soft Paper



Scott #65 (3c rose)



Scott #210 (2c red-brown)

Pick examples of these stamps with wide margins – hold up to a light.

Scott #65 Hard Paper – Smooth, white, almost translucent.

Scott #210 Soft Paper – Thicker, rough, yellowish “mottled” fibers, opaque.