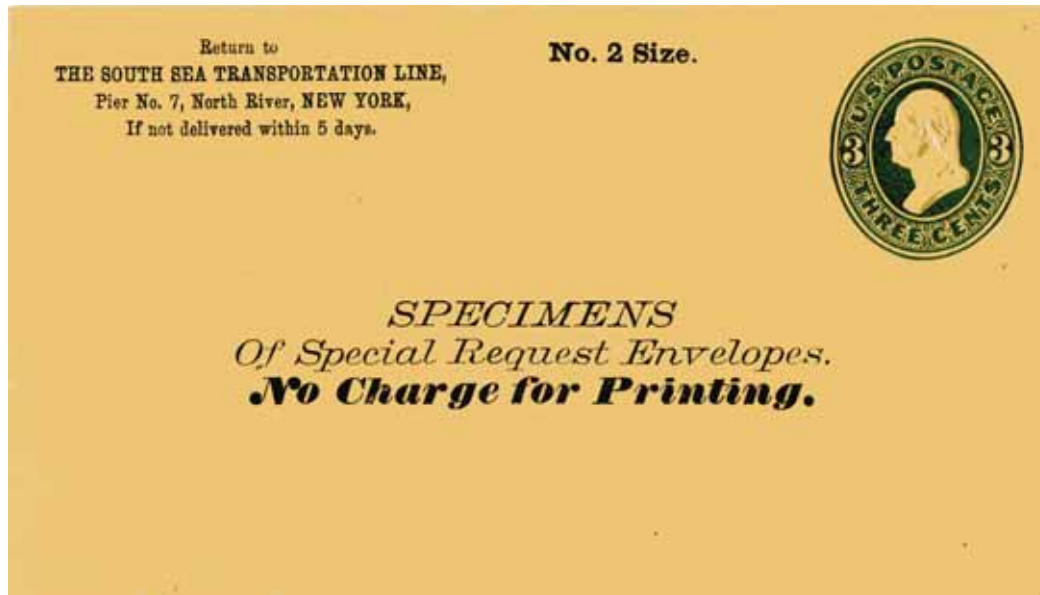


United States, SC #U142 ('75) 1874-86
2¢ Vermillion, Entire Envelope on White
"Buyer's Sample"
Specimen



United States, SC #U163 1874-86
3¢ Green, Entire Envelope on White
No. 2 Size.

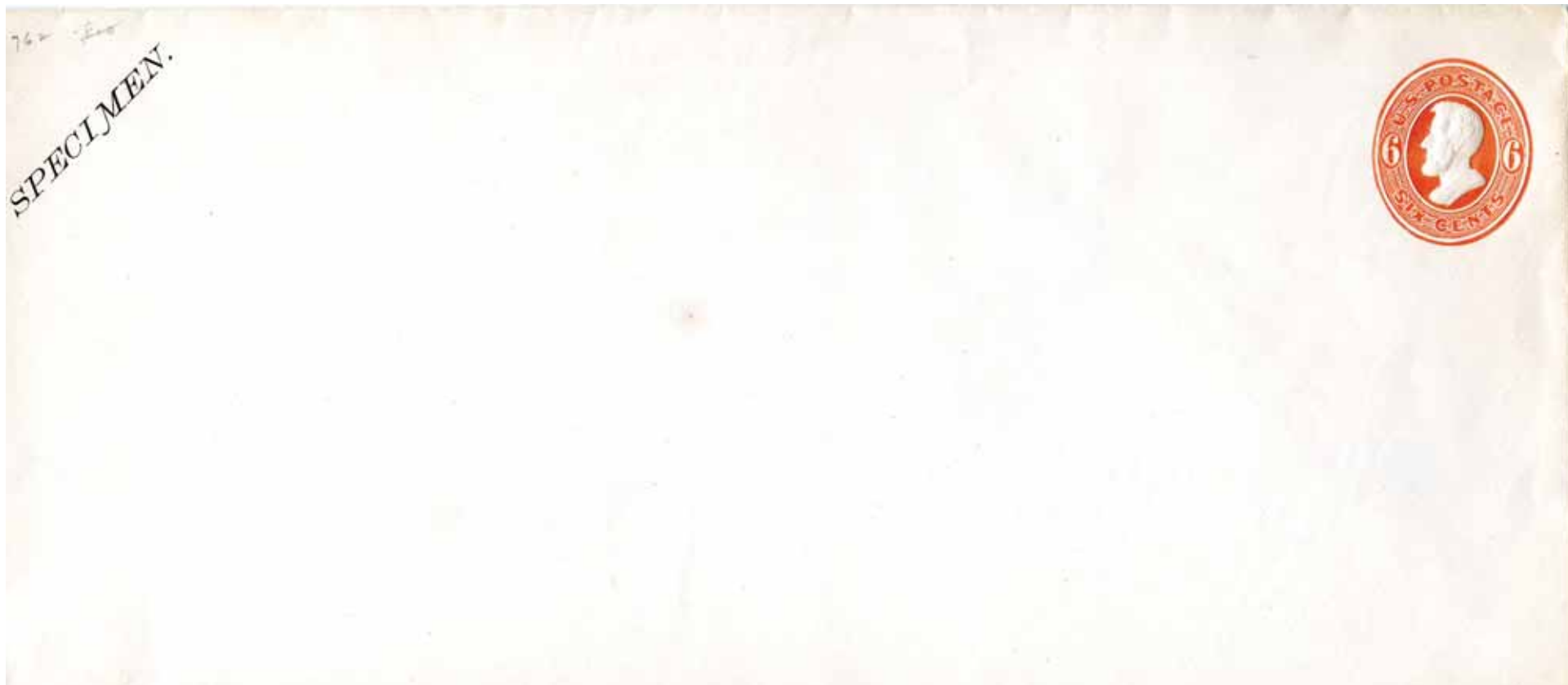
“Specimens of Special Request Envelopes.”
“No Charge for Printing.”

Corner Card: The South Sea Transportation Line, Pier No. 7, North River, NY

“Buyer’s Sample”
Specimen



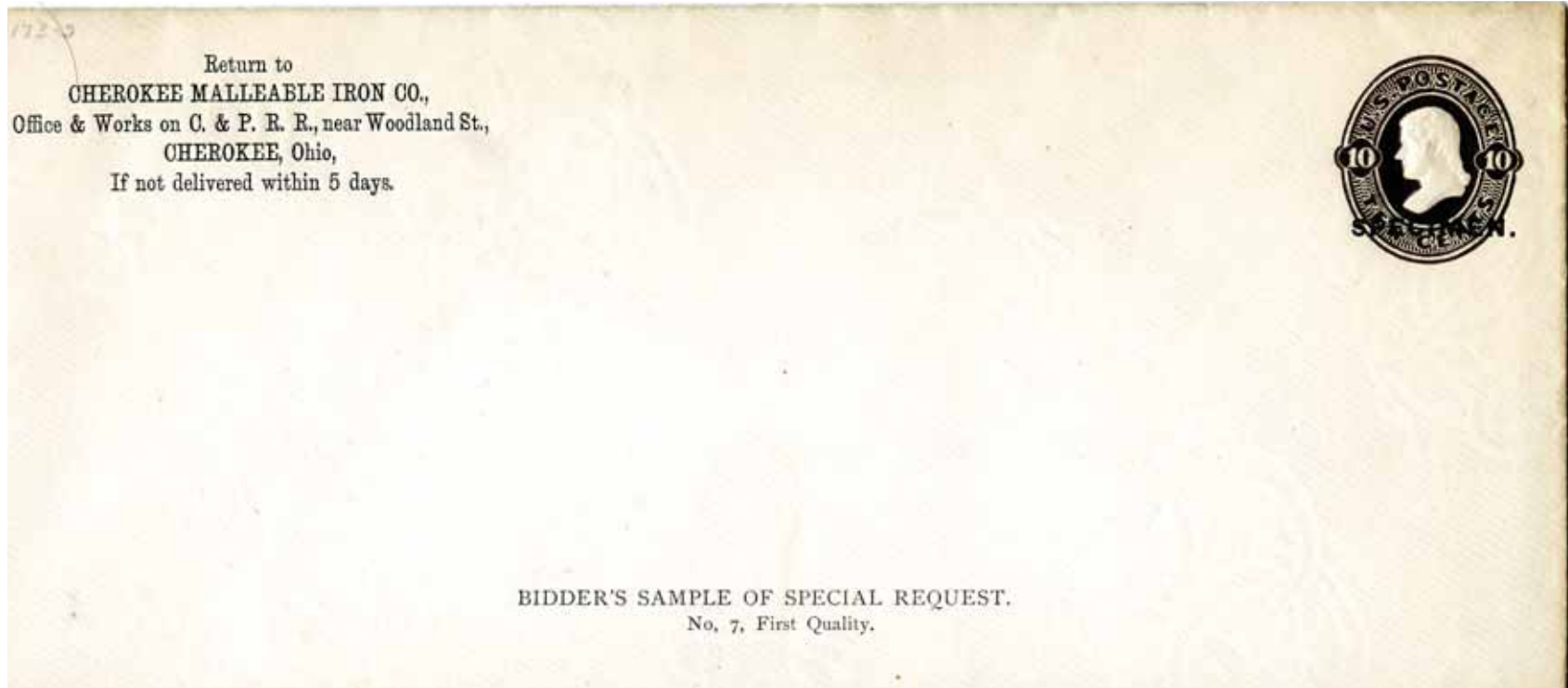
United States, SC #U179 ('79) 1874-86
5¢ Blue, Die 2, Entire Envelope on Blue
"Buyer's Sample"
Specimen



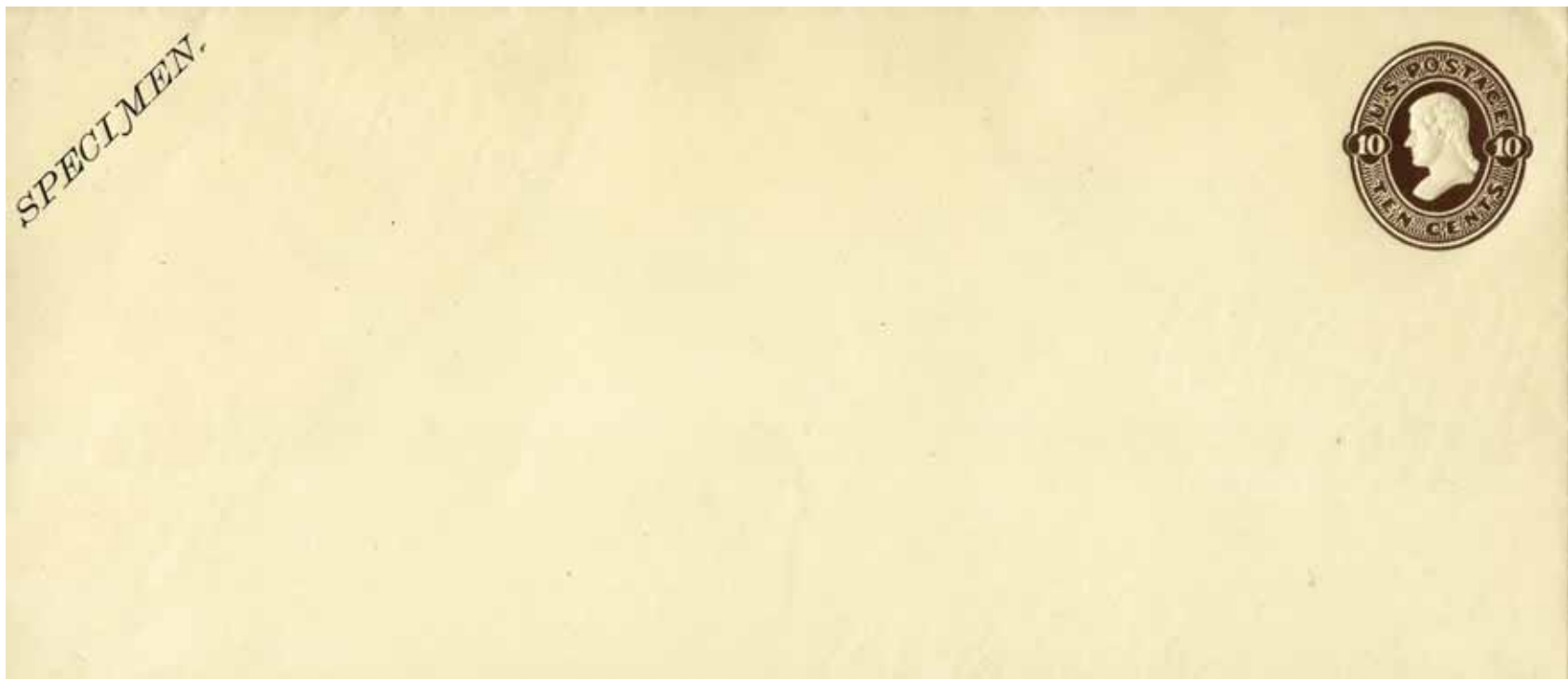
United States, SC #U181 1874-86
6¢ Red, Entire Envelope on White
“Buyer’s Sample”
Specimen



United States, SC #U184 ('75) 1874-86
6¢ Red, Entire Envelope on Fawn
"Buyer's Sample"
Specimen



United States, SC #U189 1874-86
10¢ Chocolate, Entire Envelope on White
Bidder's Sample of Special Request. No. 7, First Quality
Corner Card: Cherokee Malleable Iron Co., Cherokee, Ohio
"Buyer's Sample"
Specimen



United States, SC #U190 1874-86
10¢ Chocolate, Entire Envelope on White
"Buyer's Sample"
Specimen

SPECIMEN.



United States, SC #U190 ('75) 1874-86
10¢ Chocolate, Entire Envelope on Amber
"Buyer's Sample"
Specimen



United States, SC #U191 ('75) 1874-86
10¢ Chocolate, Entire Envelope on Oriental Buff
"Buyer's Sample"
Specimen

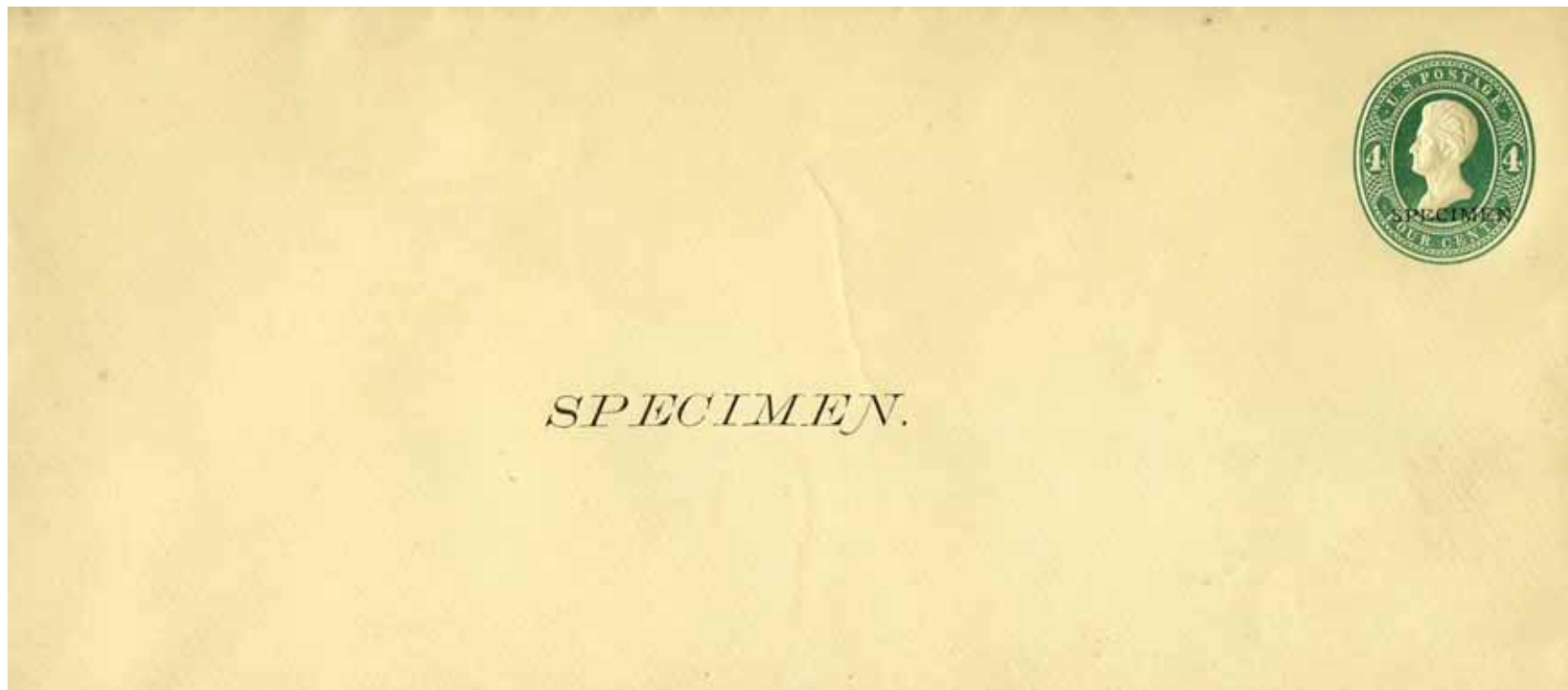
SPECIMEN.



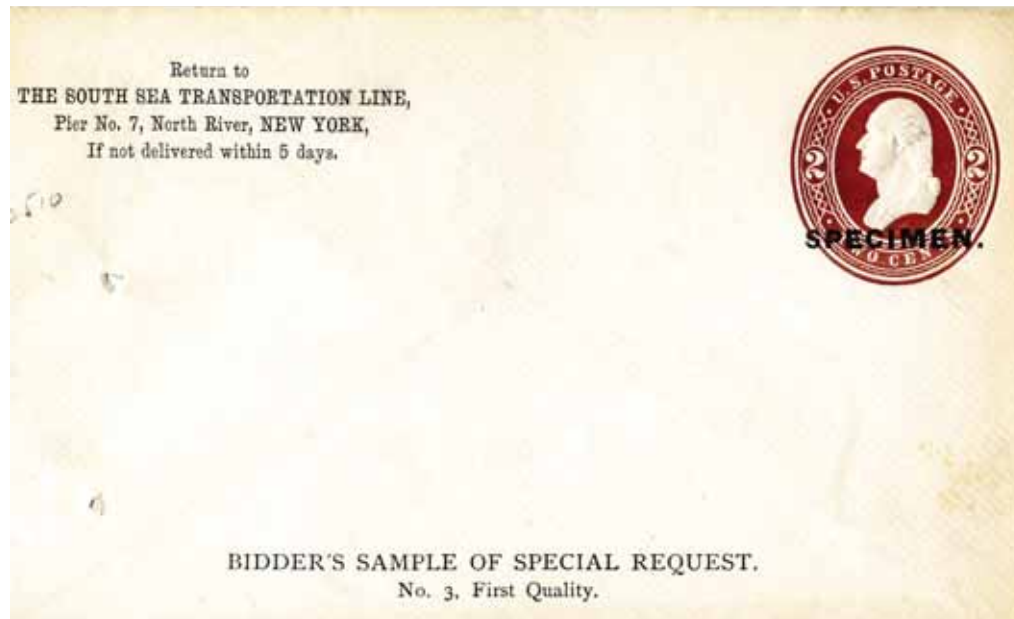
United States, SC #U198 1874-86
15¢ Orange, Entire Envelope on White
“Buyer’s Sample”
Specimen



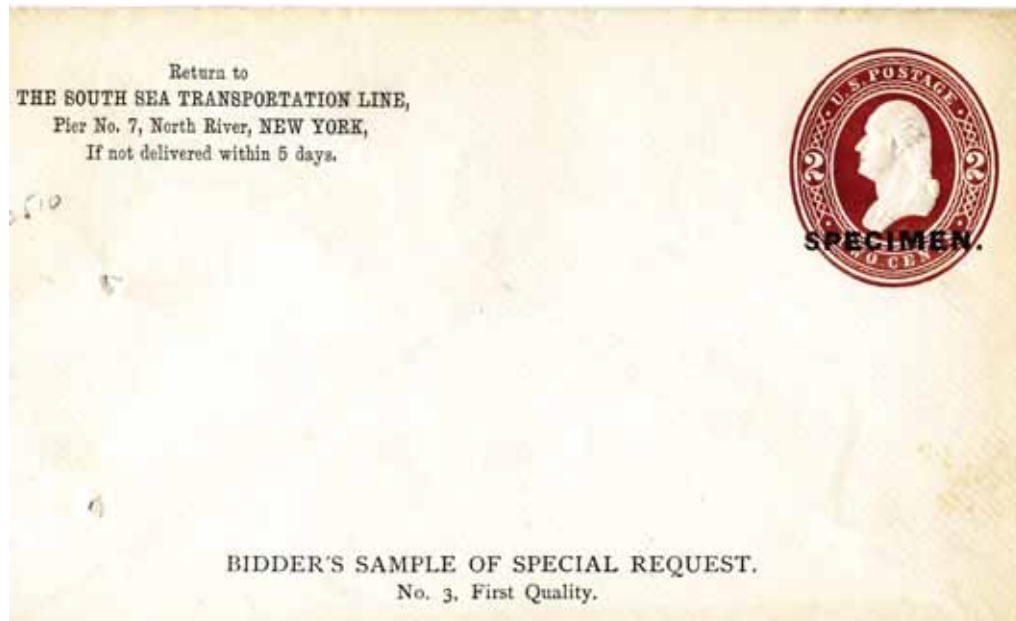
United States, SC #U204 1874-86
30¢ Black, Entire Envelope on White
"Buyer's Sample"
Specimen



United States, SC #U251 1883-86
4¢ Green, Die 1, Entire Envelope on Amber
“Buyer’s Sample”
Specimen



United States, SC #U277 1874-86
2¢ Brown, Entire Envelope on White
Bidder's Sample of Special Request. No. 3, First Quality
Corner Card: The South Sea Transportation Line, Pier No. 7, North River, NY
"Buyer's Sample"
Specimen



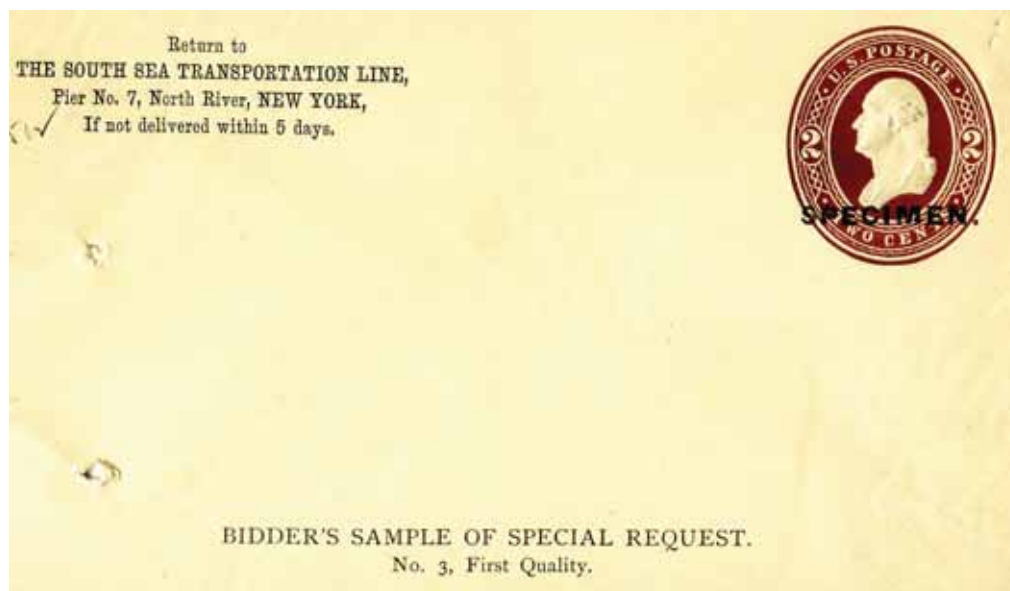
United States, SC #U277 1874-86
2¢ Brown, Entire Envelope on Buff
Bidder's Sample of Special Request. No. 7, First Quality
Corner Card: Cherokee Malleable Iron Co., Cherokee, Ohio
"Buyer's Sample"
Specimen

Return to
CHEROKEE MALLEABLE IRON CO.,
Office & Works on C. & P. R. R., near Woodland St.,
CHEROKEE, Ohio,
If not delivered within 5 days.



BIDDER'S SAMPLE OF SPECIAL REQUEST.
No. 7, First Quality.

United States, SC #U278 1874-86
2¢ Brown, Entire Envelope on Amber
Bidder's Sample of Special Request. No. 7, First Quality
Corner Card: Cherokee Malleable Iron Co., Cherokee, Ohio
"Buyer's Sample"
Specimen

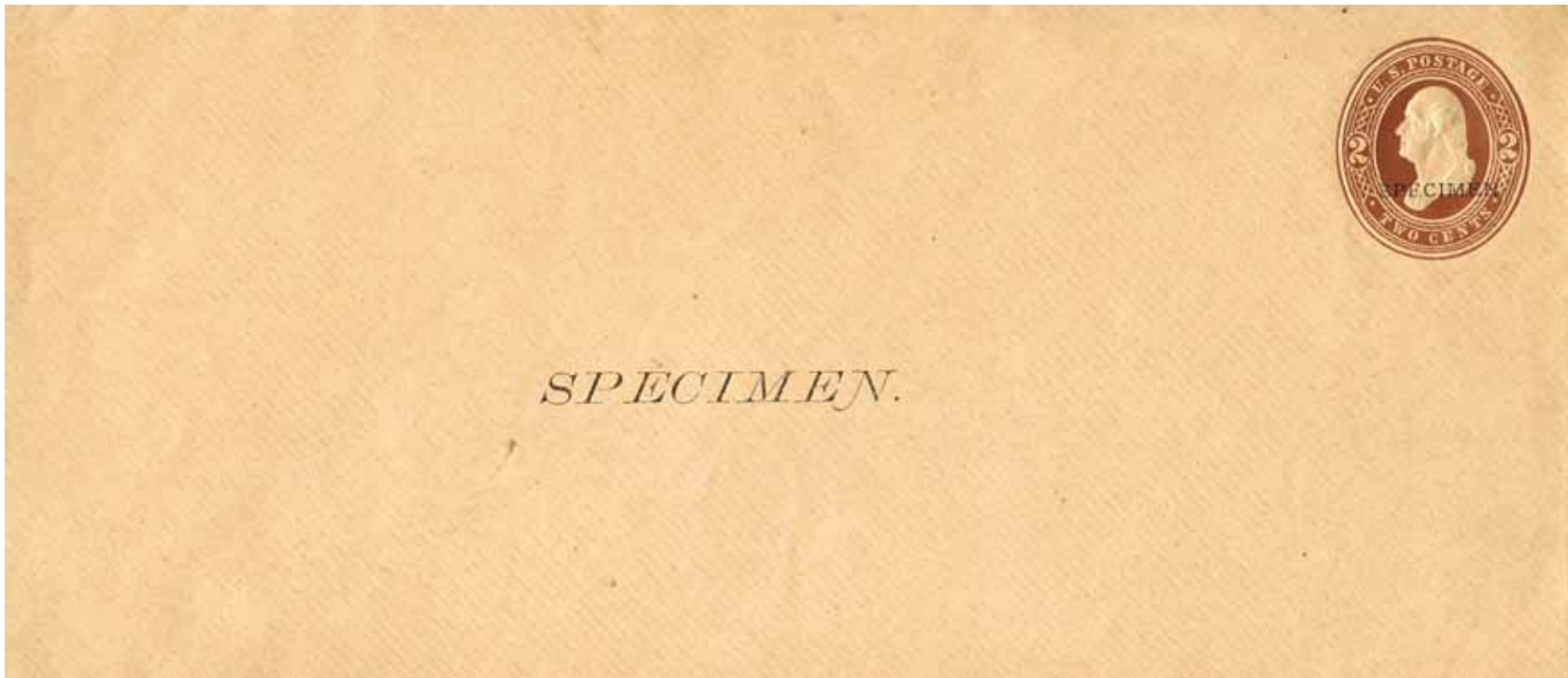


Return to
THE SOUTH SEA TRANSPORTATION LINE,
Pier No. 7, North River, NEW YORK,
✓ If not delivered within 5 days.

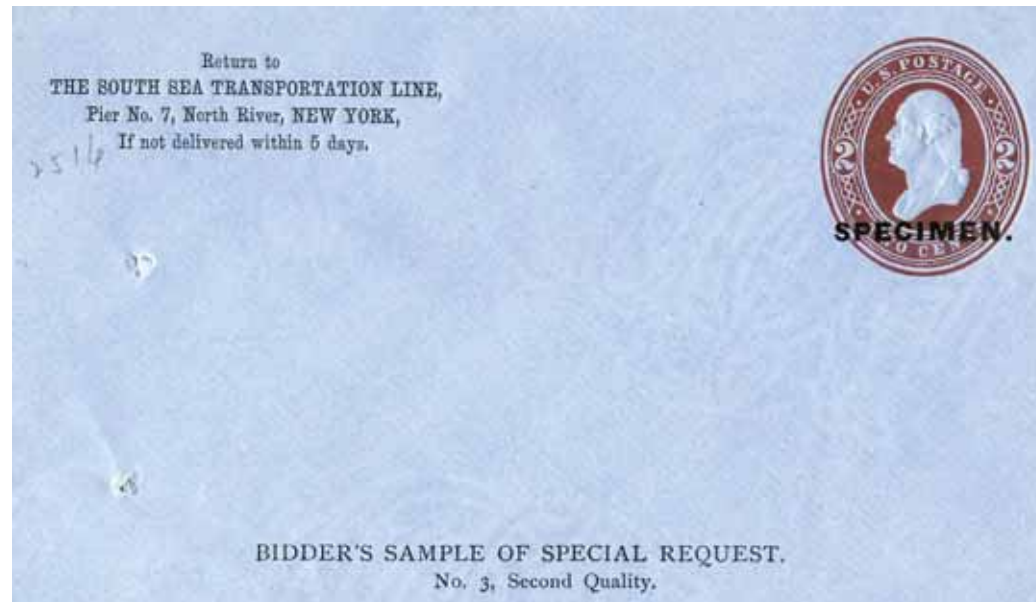


BIDDER'S SAMPLE OF SPECIAL REQUEST.
No. 3, First Quality.

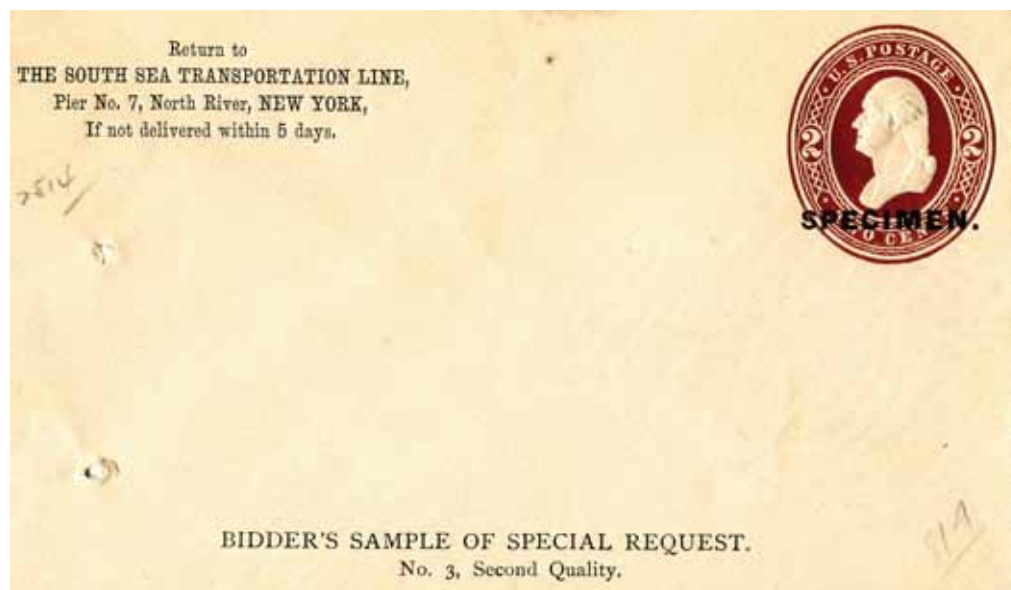
United States, SC #U278 1874-86
2¢ Brown, Entire Envelope on Amber
Bidder's Sample of Special Request. No. 3, First Quality
Corner Card: The South Sea Transportation Line, Pier No. 7, North River, NY
"Buyer's Sample"
Specimen



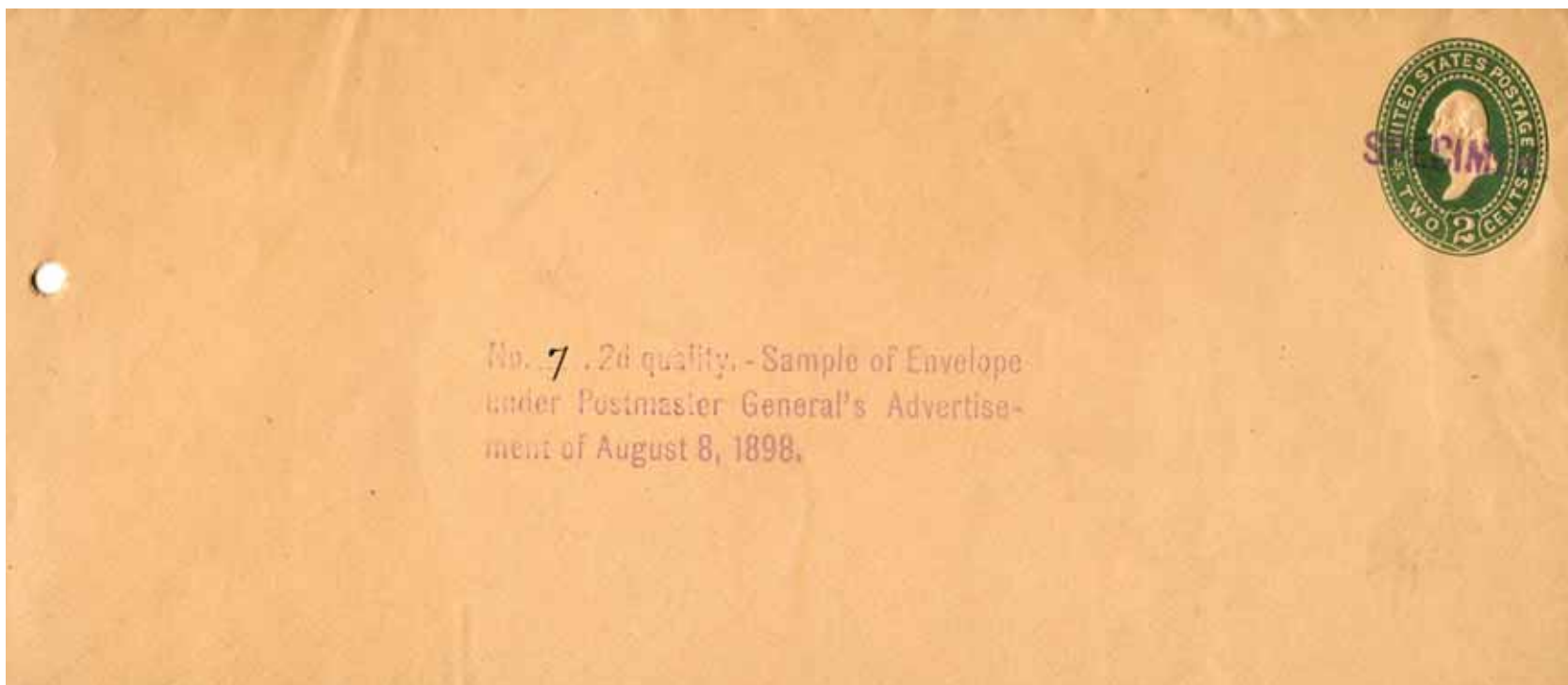
United States, SC #U281 1884-86
2¢ Brown, Entire Envelope on Fawn
“Buyer’s Sample”
Specimen



United States, SC #U280 1874-86
2¢ Brown, Entire Envelope on Blue
Bidder's Sample of Special Request. No. 3, First Quality
Corner Card: The South Sea Transportation Line, Pier No. 7, North River, NY
"Buyer's Sample"
Specimen



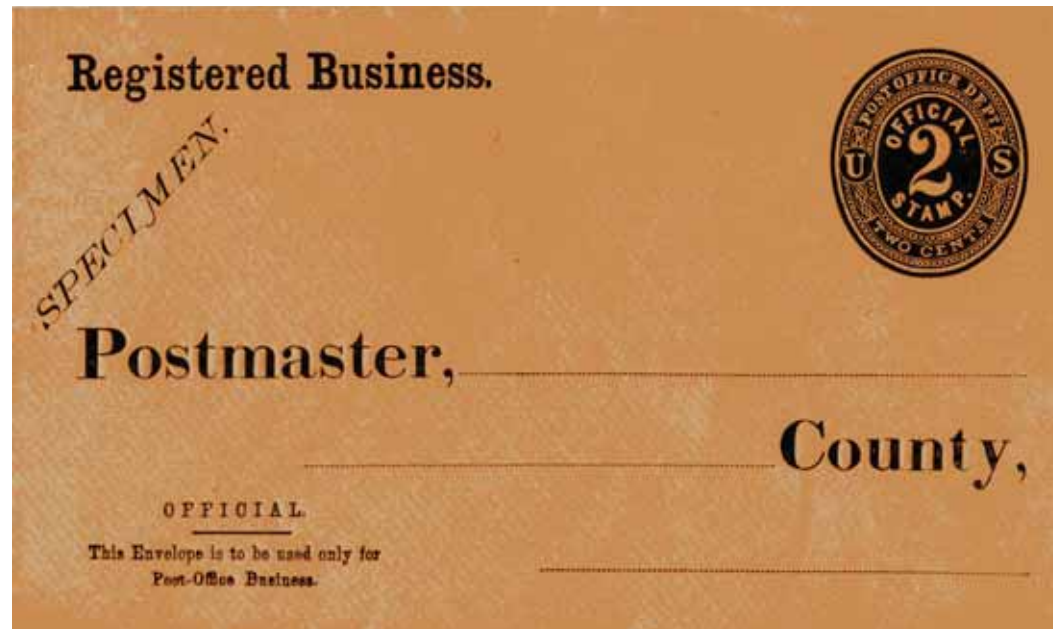
United States, SC #U281 1874-86
2¢ Brown, Entire Envelope on Fawn
Bidder's Sample of Special Request. No. 3, First Quality
Corner Card: The South Sea Transportation Line, Pier No. 7, North River, NY
"Buyer's Sample"
Specimen



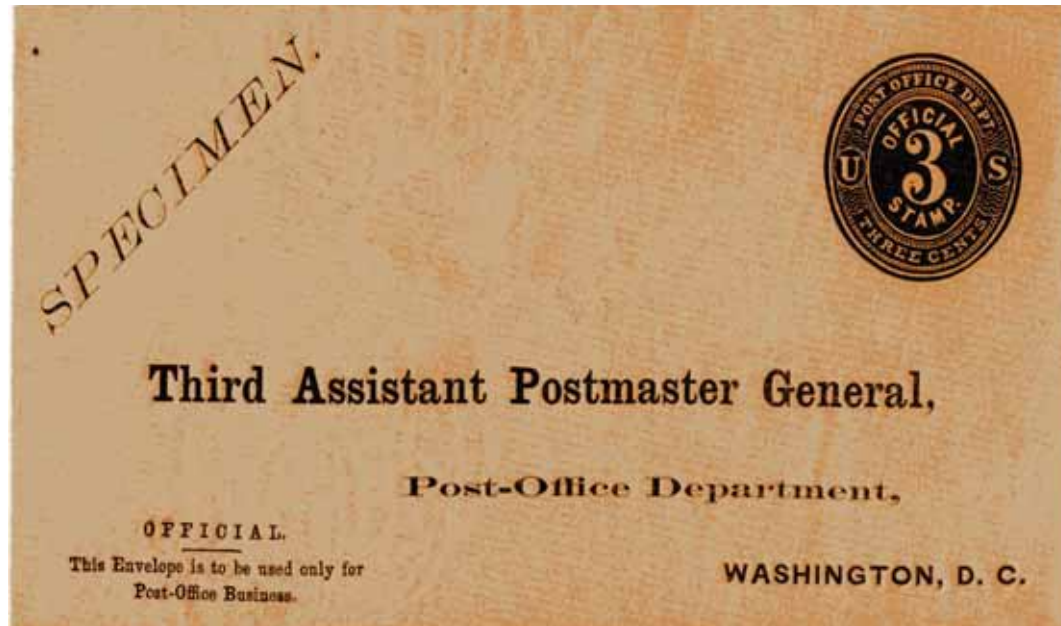
United States, SC #U313 ('86) 1887-94
2¢ Green, Entire Envelope on Oriental Buff
"No 7. 2nd Quality - Sample of Envelope under Postmaster General's
Advertisement August 8, 1898."
"Buyer's Sample"
Specimen



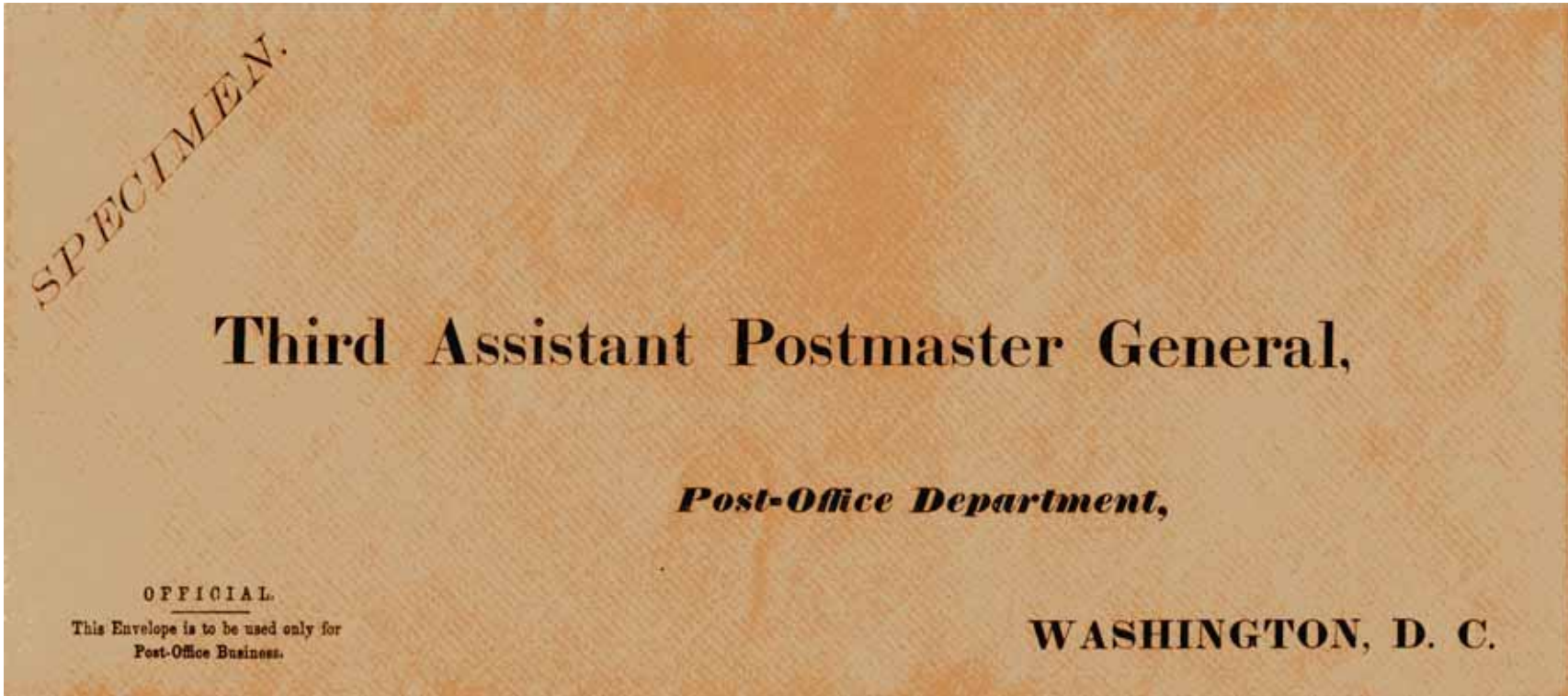
United States, SC #U349 1893
2¢ Violet, Entire Envelope on White
“Buyer’s Sample”
Specimen



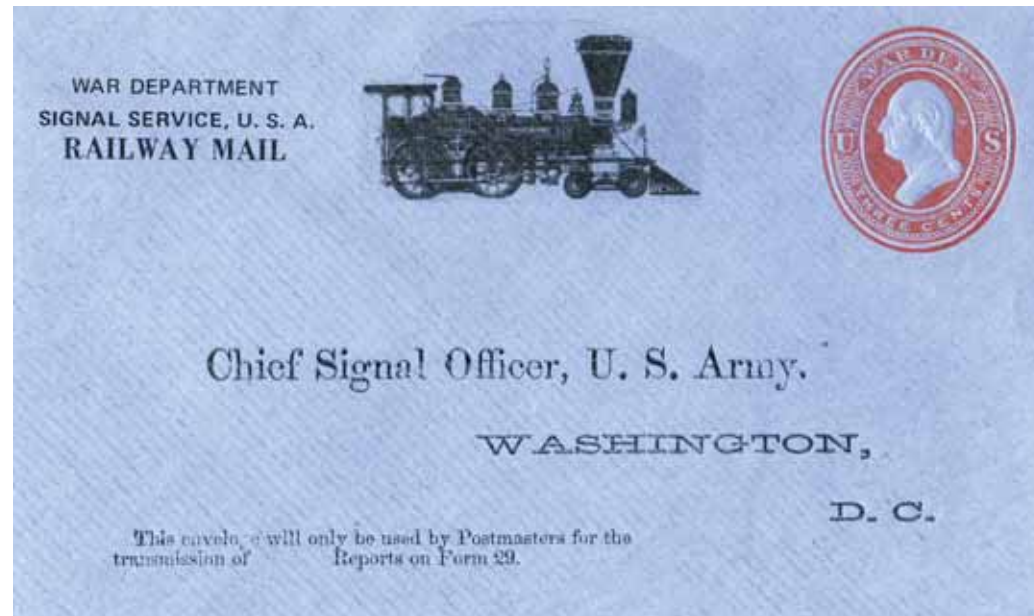
United States, SC #U05 1893
2¢ Black, Entire Envelope on Lemon
Official: "This Envelope is to be used only for Post-Office Business."
Registered Business
Specimen



United States, SC #U07 1893
3¢ Black, Entire Envelope on Lemon
Official: "This Envelope is to be used only for Post-Office Business."
Specimen



United States Official
No Denomination, Entire Envelope on Lemon
Addressed: Third Assistant Postmaster General
Post-Office Department, Washington, D.C.
Official: "This Envelope is to be used only for Post-Office Business."
Specimen



United States, SC #054 1875
2¢ Red, Entire Envelope on Blue
One hundred year old US Railway missive War Department.
Signal Service Railway bulletin cover on Blue, Type A.
Addressed: Chief Signal Officer, U.S. Army,
Washington, D.C.