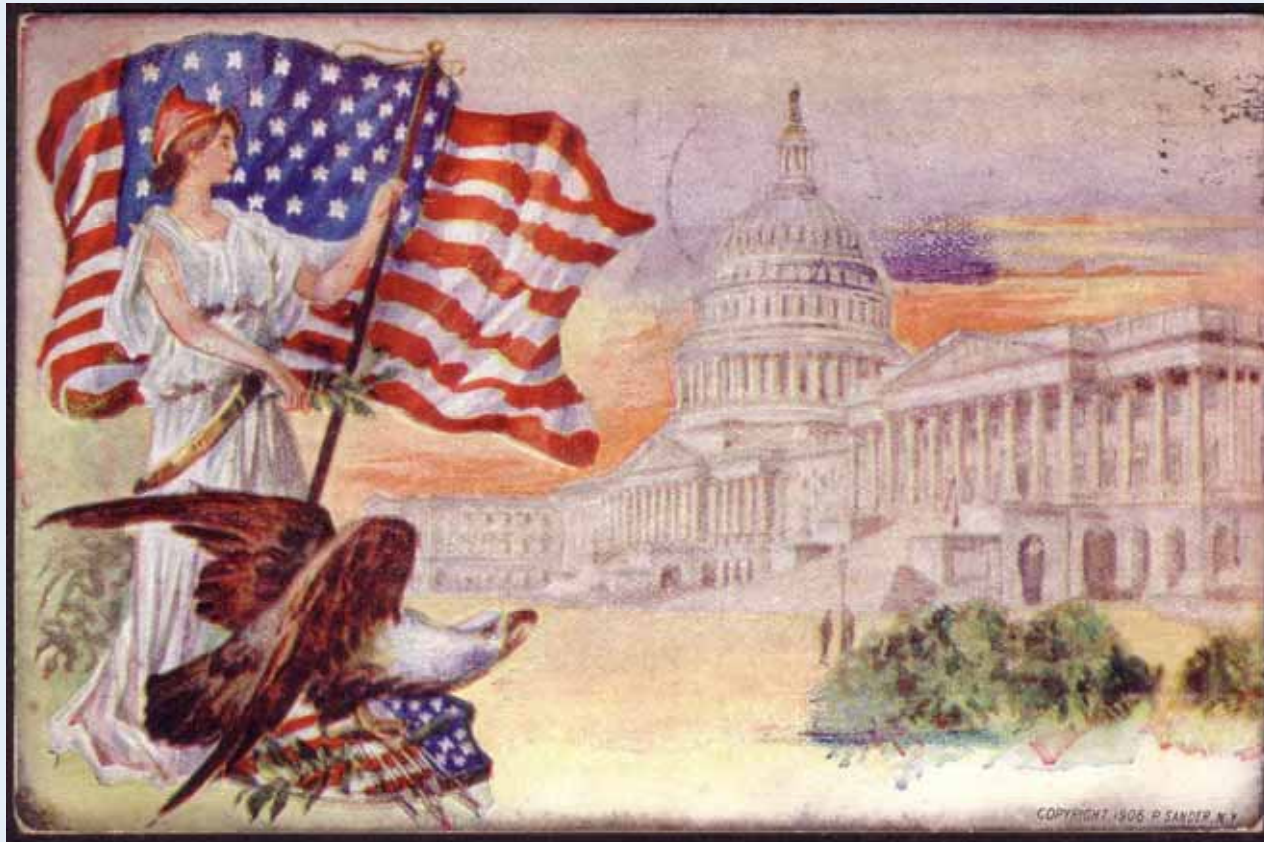


EARLY PATRIOTIC POSTCARDS



America, Columbia (the eagle) and the Capitol on 1906 P. Sander (publisher) card.

by Jeff Boyarsky

POSTCARD TYPES

- Pioneer Era: Pre 1898 (includes US Gov't)
- Private Mailing Card: 1898 – 1901
- Undivided Back: 1901 – 1907
- Divided Back: 1907 – 1915
- Others: White Border, Linen, Photochrome

PIONEER ERA: PRE 1898

In 1861 Congress approved a law allowing the mailing of postal cards. That same year, John P. Charlton of Philadelphia, PA was granted a copyright on *privately manufactured postcards*. This copyright was transferred to H. L. Lipman of Philadelphia.



Source: www.pioneerpostcards.com/halloffame.htm

PIONEER ERA: PRE 1898

U.S. 1875 Postal Stationery Card – 1c Brown Scott UX1

Upgraded with 1c Blue Issue Scott #156 and tied by two cork fancy cancels with New York City postmarks.

Addressed to Switzerland with Bern arrival and posted with a bridge-type received cancel.



Source: <http://www.world-covers.com/cover-7664>

PRIVATE MAILING CARD: 1898 – 1901



PMC's have an undivided back (for address only).

This example was mailed after 1901 when the postal rate dropped to 1 cent.

UNDIVIDED BACK: 1901 – 1907



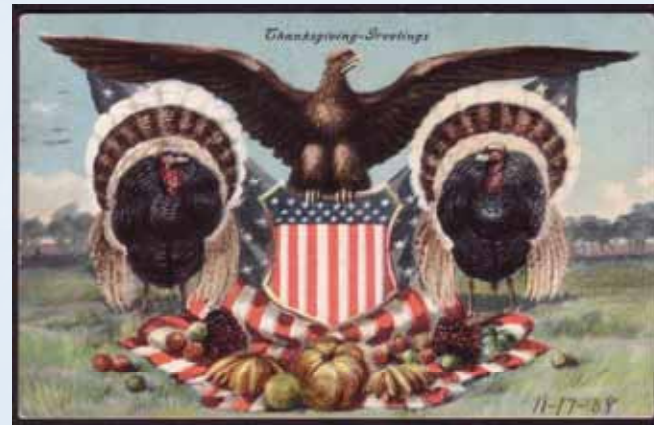
Undivided back postcard used after 1907 which allows a message on the back.
Also note 1912 R.P.O./ RMS duplex cancel.

DIVIDED BACK: 1907 – 1915

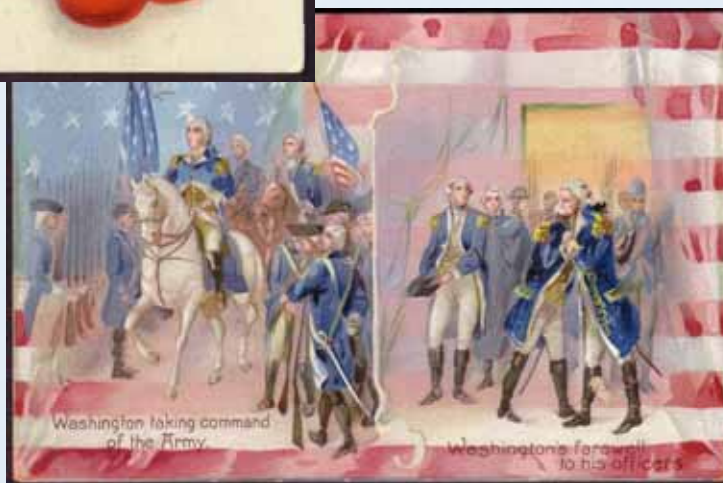


Early use (1907) of a divided back postcard.

TOPIC: HOLIDAYS



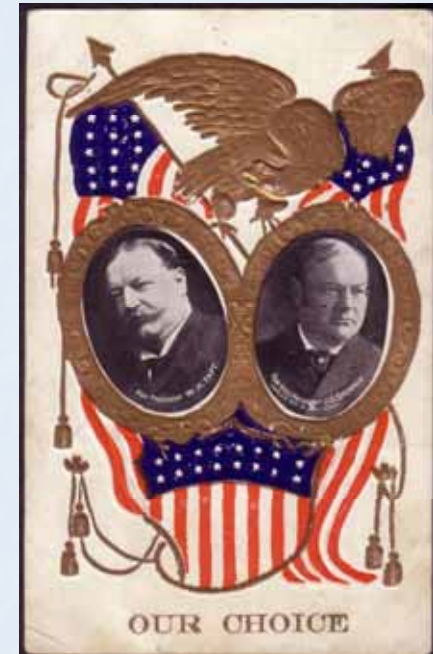
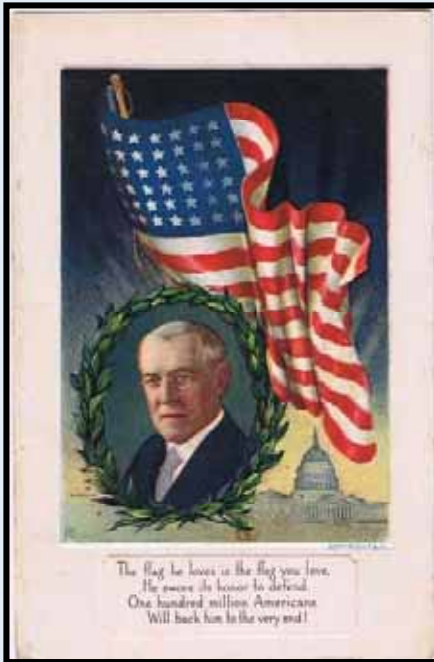
TOPIC: WASHINGTON



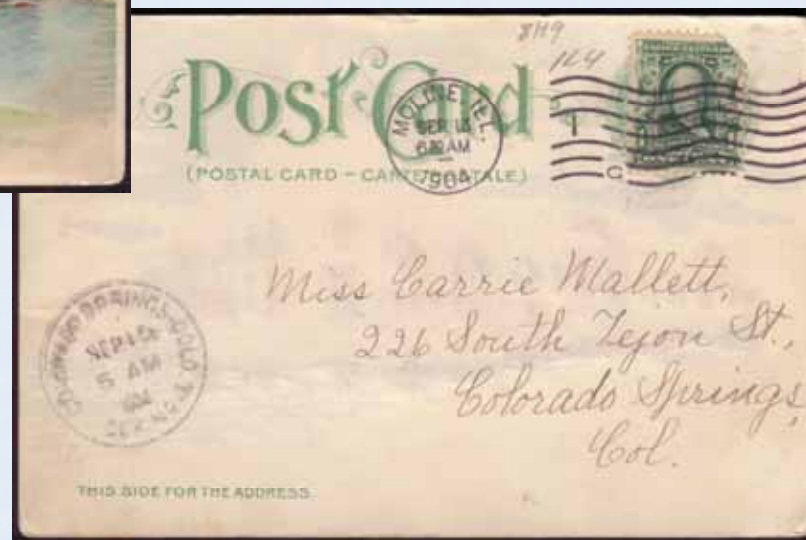
TOPIC: NATIONAL SYMBOLS



TOPIC: PRESIDENTS



SOUVENIR "LIGHT" CARD



Official Souvenir Card from the 1898 Omaha Trans-Mississippi and International Exposition.
Hold the postcard up to a light and the Electricity Building lights up!

THANK YOU !