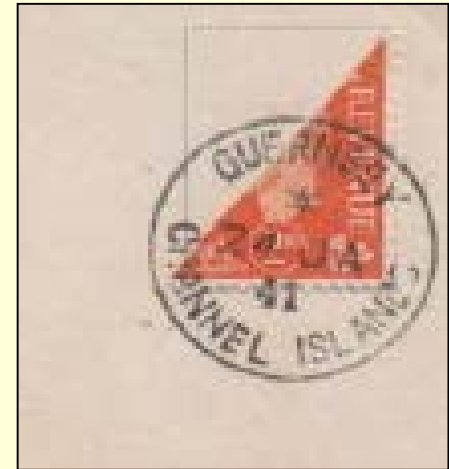


# Bisects and Splits

- Stamp values not available
- Higher value stamps used
- Diagonal scissor cuts
- Scott often lists Bisect use



# Diagonal Bisect



**Ponta Delgada #1c (5 Reis)  
Diagonal Bisect with a 1894 Cancel**

# Vertical Bisect



**Belgium Q210a (6 Francs on 5.5 Francs)  
Vertical Bisect with a 1939 CDS**

# Combination Bisects



**Portugal #61 (50 Reis) and #59 (10 Reis) used  
to pay 30 Reis letter rate**

# Joined Bisect



**Guatemala #300 (Bisect) and #300a (Unsevered Pair)  
Original Issue was #235**

# Joined Bisect



**Original Issue #235 was perforated (how?) to create a diagonal bisected stamp. No scissor cuts needed.**

# Future Bisects

**Help me expand this presentation !!!**